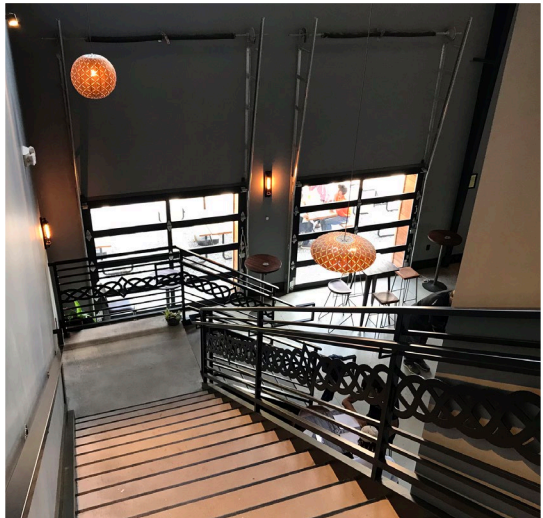




  
**THE LOST DRUID**  
 BREWERY | TAPROOM | KITCHEN  
 AVONDALE ESTATES | GEORGIA



## The Lost Druid Brewery | Avondale Estates, Georgia

Located in Avondale Estates' burgeoning Rail Arts District (RAD), is a comfortable, community-centric taproom with executive conference facilities, shareable/small plate-oriented kitchen, and 20 frequently changing beers.

Axis was hired by BrewKraft to design a new 6,864-square-foot facility for a 10-barrel brewery. The space consists of an open 5,000-square-foot footprint with an 1,865-foot mezzanine towering over the brewery space. This dynamic space features a 1,500-square-foot production area (eight fermentation tanks), a 2,200-square-foot tasting/dining room, a 1,000-square-foot kitchen, an 1,100-square-foot private meeting space, a 1,000-square-foot accessory storage area/mechanical rooms, office space, new restrooms, and an outdoor patio.

The brewery's personality is showcased with a clean, modern industrial décor with a massive open-web wood truss over the bar with heavy metal accents throughout.

### Role of Firm:

Architecture | Structural Engineering | MEP Engineering | Entitlement  
 Project Management | Construction Coordination | Project Closeout

### Preconstruction Design Services:

Field Measurements | Base Plan Preparation | Project Photos  
 Concept Plans | Design Drawings and Construction Documents  
 Permit Submittals and Approvals | Health Department Approvals  
 RFIs and Construction Phase Services

